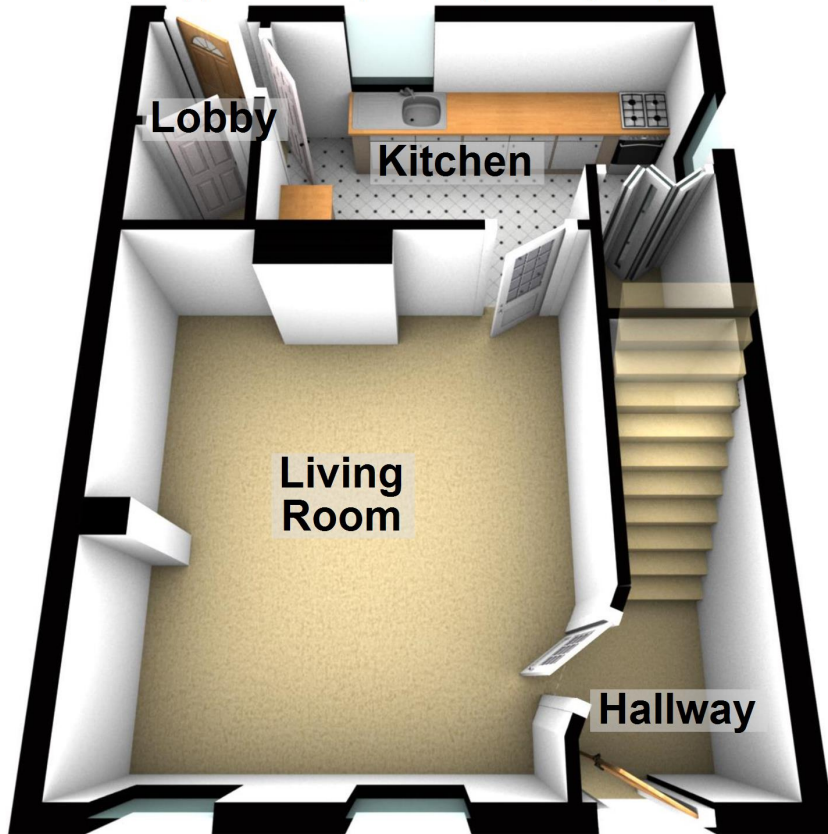


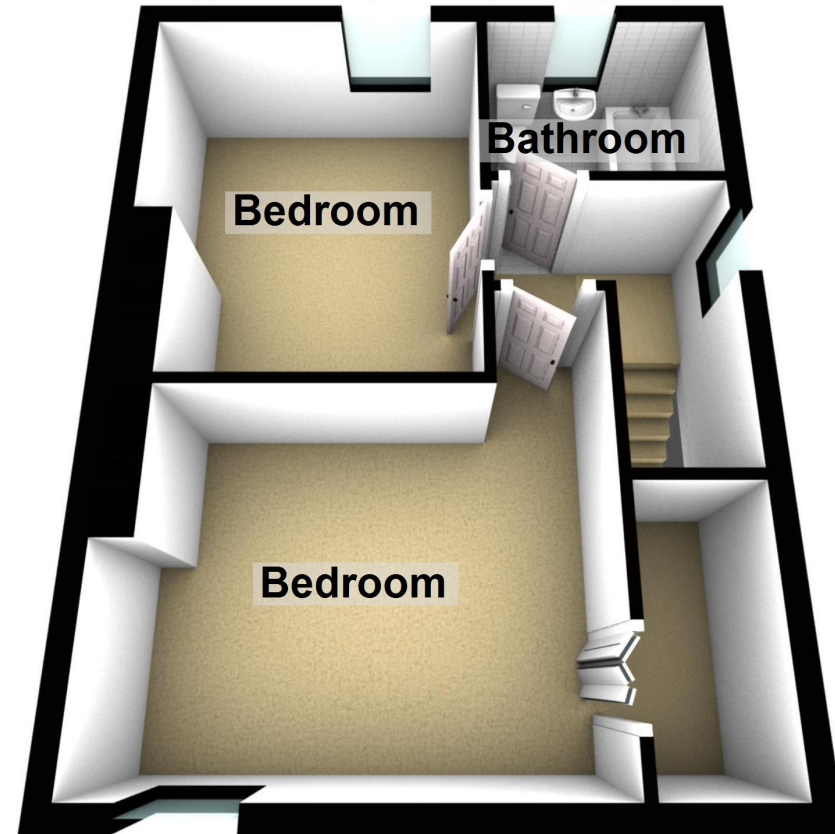
## Ground Floor

Approx. 35.4 sq. metres (381.2 sq. feet)



## First Floor

Approx. 35.4 sq. metres (381.2 sq. feet)



Total area: approx. 70.8 sq. metres (762.4 sq. feet)

This floor plan is an approximate guide to the layout of the property only. It is not to scale.  
Plan produced using PlanUp.